

## **CWSentry3G™ Chemical Detection System:**

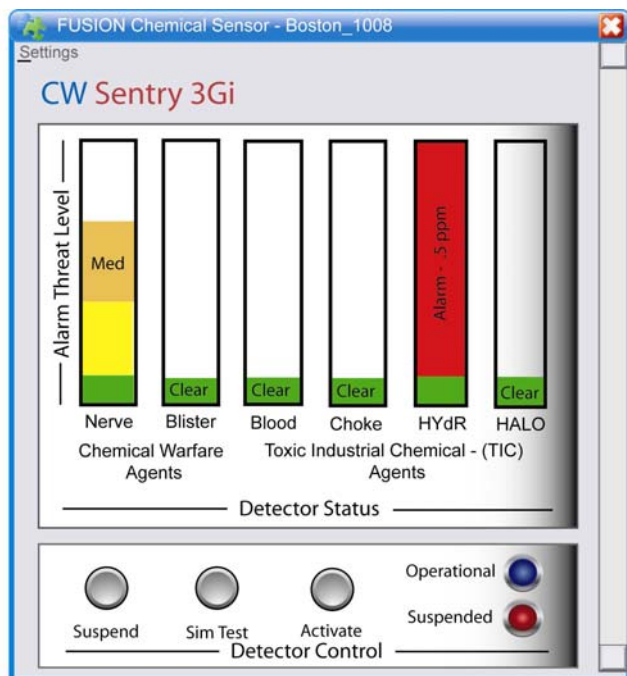
The CWSentry3G is a compact, wall mounted sensor designed to detect the presence of Chemical Warfare Agents (CWA) or Toxic Industrial Chemicals (TICs). The CWSentry3G is a fully automatic detection sensor designed for fixed site installations, HVAC systems, office buildings, subways and other similar targets. The CWSentry3G™ CW-300i detection system is designed to integrate with Secureteq FUSION, an enterprise wide threat sensor monitoring & management system with encrypted IP Ethernet connectivity.

The system can be configured to detect a wide range of chemical agents including TABUN, SARIN, SOMAN, Cyclosarin, Mustard Gas and TIC's such as Chlorine.

**Designed to Network to integrate with Secureteq FUSION™ Threat Sensor Monitoring Platform**

**Facilities or Infrastructure Chemical Detection**

**Early Detection and Identification of Chemical Warfare Agents and Toxic Industrial Chemicals**



# CWSentry3G™ CWS-300i Technical Specifications (typical)

## General Description:

The CWS-300i is a rapid response chemical threat detection sensors designed to react to, and identify chemical warfare agents and Toxic Industrial Chemicals. The system offers programmable alarm levels. The CWSentry3G CWS-300i is designed to seamlessly integrate with Secureteq FUSION Threat Sensor Monitoring Platform.

## Electrical Specifications:

### Detector Type:

SAW - Surface Acoustic Wave micro sensor array (cw agents)  
Electro-chemical Cell Array (TIC)

### Chemical Agents Detected:

Nerve Agents (G) – Meets the ECt50 mild exposure dose level

Blister Agents (H) – Meets the ECt50 mild exposure dose level\*

Hydrogen Cyanide – Blood Agent – "BLoD" (AC) – 5.0 ppm

Phosgene – Choke Agent – "CHOK" (CG) – 0.3 ppm

Hydride – "HYdR" – 0.5 ppm

Halogen – "HALO" – 10.0 ppm

**Detection Response Time:** SAW – 5 Seconds  
Electro-chemical Sensor – 30 seconds

**Local Alarm Output:** Dry contact output, NC/NO  
**Local Trouble Output:** Dry contact output, NC/NO  
**Local Tamper Output:** Dry contact output, NC

**Data Communications:** 256bit AES Encrypted IP Ethernet NIC  
(Threat Type, Alarm, Trouble, Levels)

**Operating Power:** 110VAC, 60 Watts

## Physical Specifications:

**Construction:** NEMA4 enclosure w/ Tamper screws, gray

**Temperature Range:** -4° F(-20° C) to 122° F(50° C)  
May be certified for operation from -40° F(-40°C) to 150° F(65°C)

**Size:** 24.75 x 19.5 x 9.5 inches (62.9 x 49.5 x 24.2 cm)

**Weight:** 40 lbs (18.2kg)

## Ordering Information:

<u>Part Number</u>	<u>Description</u>
CWS-300i-1200030	Detects Nerve, Blister Agents and Toxic Industrial Chemicals (TICs) (Hydrogen Cyanide, Phosgene, Halogen and Hydride Gases)